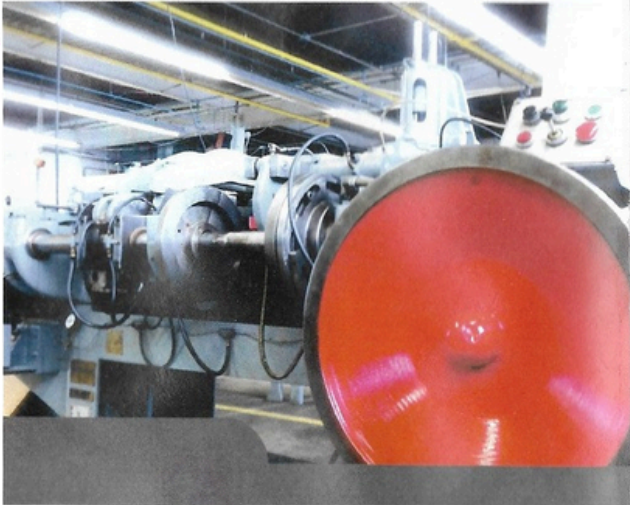


ABOUT US

At Top Knotch, we treat our customer's as partners, and have a clear understanding of their needs, and how critically important it is to maintain consistency across our range of services. From yard signs to four-slide forms to progressive dies, we will meet our customers needs. We have a reputation for innovation, building high quality tooling, and our customers can be assured of high quality precision products delivered on time.

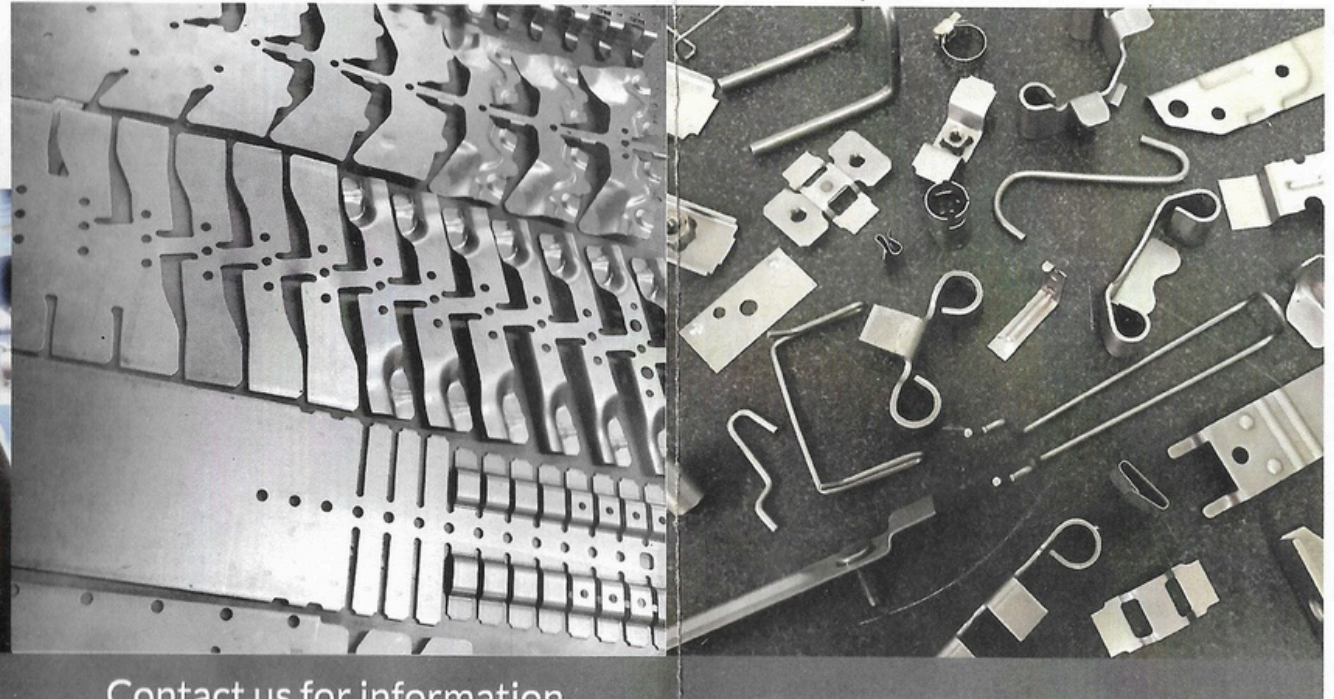


How it started?

In 1990 the second chapter of Top Knotch Products Inc. started out in a 300 square foot garage as a small die repair and light metal stamping production company. With limited resources; sacrifice and time were needed to make way for future growth and improvement, which is a concept we still follow today.

How it started? *continued...*

Today, Top Knotch Products is located in a 38,000 square foot facility and employs nearly 25-30 people. The company has grown over the years through continual improvement and team work to build on new concepts of design and quicker more efficient production for our customers needs.



Contact us for information.



216-631-6262



3865 West 150th Street
Cleveland, Ohio 44111



sales@topknotchproducts.com

TKP top knotch products

Now 50,000 square feet: 35 of the 4 slide or multi slide and several vertical stamping presses up to 240 tons

www.topknotchproducts.com

OUR SERVICES

With over 25 punches presses/four-slides; we have the capacity, quality control, capabilities and flexibility to meet all requirements needed to manufacture your part on time with top quality.



Our extended support

We extend our support through all engineering and development phases of your project. This includes after work hours and traveling when necessary. You will be assured everything is on schedule.

Our Mission:

"At Top Knotch, our goal is to supply nothing but the best quality metal stampings for our customers; in a timely manner that fits their budget."

Versatility

Our versatility is what separates us from our competition. Many times the costs are extremely high to build punch press tooling for very advanced intricate parts. Multi-slides and four-slides can reach and achieve many complex contour bends, angles, draws, forms and more that a press cannot. Not only that, but the options are endless as there are several add-on components that can be added to the mix.

With ongoing research and evolving growth, we continue to become more lean and efficient with our manufacturing processes. This gives our customers the satisfaction of knowing they are getting top quality and winning the battle of cost effectiveness.

1 Four-Slide Tooling

Our Four-Slide and Multi-Slide capabilities go as far as producing complex parts that typical punch presses and multiple operations cannot handle economically and production-wise in a timely manner.

2 Punch Press Stampings

Over 40 years of designing and engineering and running General Press, Progressive Die and Single-Hit operations.

3 Machine build and Fabricating

We build and retrofit our machinery to meet your part needs. For example: this allows us to stamp/form thicker material (.090" - .240") in a four-slide with lower tooling costs.

4 Added Value

Our Added Value is what separates us from our competitors. With our expertise we coordinate assemblies, spot welding and special coating and/or treatment when needed.

Why choose us:

- Family owned, 3rd Generation
- 42 years of experience and improving
- Versatility between multiple manufacturing processes: This creates options
- ISO-9001
- On time delivery
- Outstanding Quality
- Creative and Innovative Solutions
- Ongoing research and improvement
- Trust and True Credibility - long standing successful history with our past customers