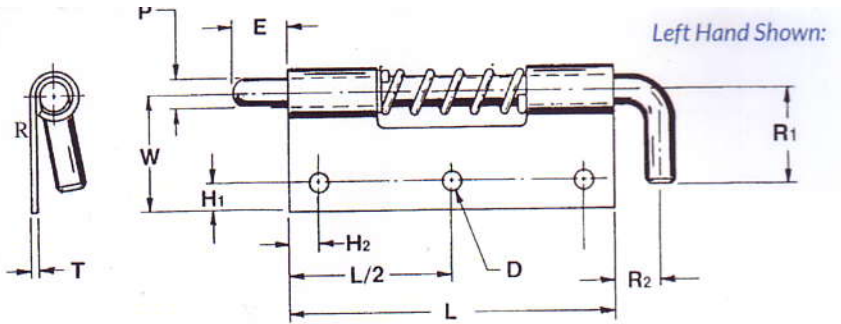


Spring Latch Series Design Specifications

*Designates dimensions that can be altered to meet your specifications.

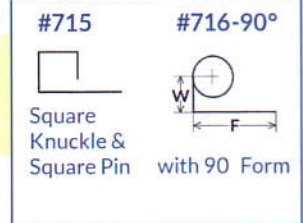


PART NUMBER	711	712	713	714	715	716	718	723
-------------	-----	-----	-----	-----	-----	-----	-----	-----

PIN									
P	Pin Diameter	.125	.156	.187	.250	.187 SQ	.250	.375	.250
* E	Extension	.187	.250	.375	.500	.250	1.250	1.00	.625
* R1	Handle Length	.437	.625	.687	.812	.610	.720	1.50	.812
* R2	Handle Extension	.187	.250	.312	.375	.312	.375	1.50	.430

BODY									
L	Length	.875	1.375	2.000	2.75	.875	3.50	4.00	2.75
* W	Width	A		B		C		D	
		.375	.500	.625	.75	.50	.720	1.50	.955
		.500	.750	.875	1.000	-	-	-	-
T	Thickness	.040	.040	.050	.060	.050	.060	.080	.090
* H1	Hole Location	.156	.187	.187	.250	.181	.281	.620	.400
* H2	Hole Location	.156	.187	.250	.250	.156	.750	.750	.375
* R1	Handle Length	.437	.625	.687	.812	.610	.720	1.50	.812
* R2	Handle Extension	.187	.250	.312	.375	.312	.375	1.50	.430

MATERIAL	Steel	Stainless Steel	Aluminum
Designation	S	C	A
Pin Type	12L14	303	SS
Body	1010	304	5052
Spring	302	302	302
C-Ring	PH15-7 MO	PH15-7 MO	PH15-7 MO

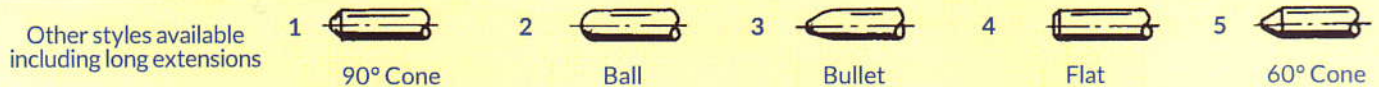


All springs and c-rings are made with stainless steel.

MODEL

R = Right Hand L = Left Hand U = Unassembled

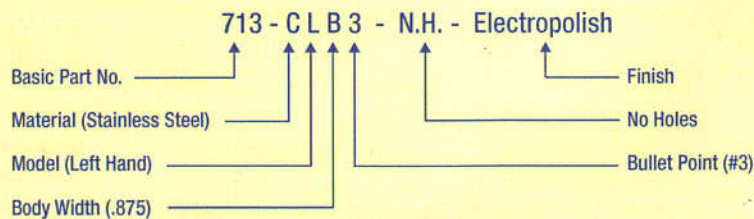
POINT STYLES



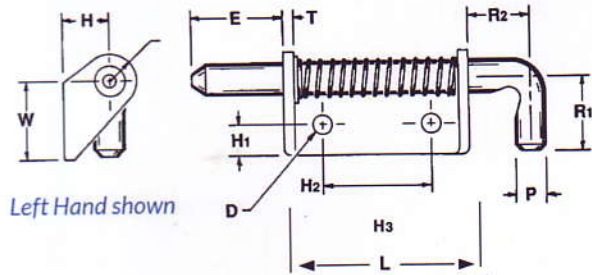
FINISH

Most commercial finishes are available including zinc plate on steel, passivate and electropolishing on stainless steel, and anodize on aluminum.

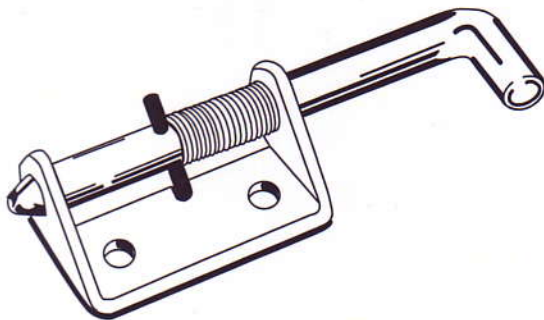
ORDERING INFORMATION



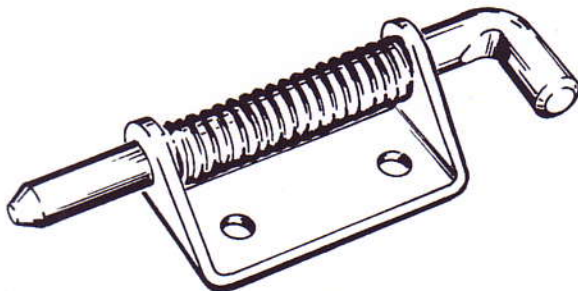
Heavy Duty Spring Latch Series 719-720



WITH HOLDBACK:



WITHOUT HOLDBACK:



heavy-duty 719-720 Series spring latches are available in 3/8" and 1/2" pin diameters, respectively. These large, rugged latches are available in steel or stainless steel and have a closed knuckle for added durability and strength. They are ideally suited for truck bodies, utility vehicles, horse trailers and more. The offset body design provides more flexibility with placement on tight applications.

PART NUMBERS

PIN	719	720
P Pin Diameter	.375	.500
* E Extension	1.250	1.500
R1 Handle Extension	1.187	1.218
R2 Handle Extension	.687	1.000

BODY

L Length	2.000	3.000
H Height	.656	.750
W Width	1.12	1.250
T Thickness	.125	.187
H1 Hole Location	.375	.500
H2 Hole Location	.437	.625
H3 Hole Location	1.125	1.750
* D Hole Diameter	.265	.328

MATERIAL

Designation C = Stainless
S = Steel

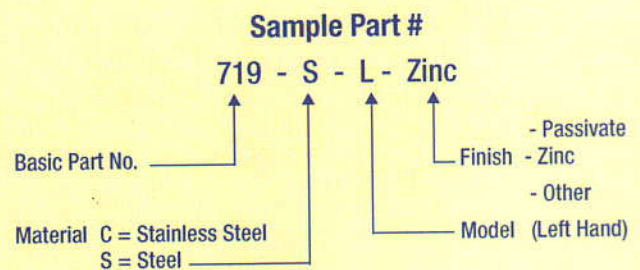
MODEL

R = Right Hand
L = Left Hand
U = Unassembled

FINISH

Most commercial finishes are available, including zinc plate on steel, passivate and electropolishing on stainless steel.

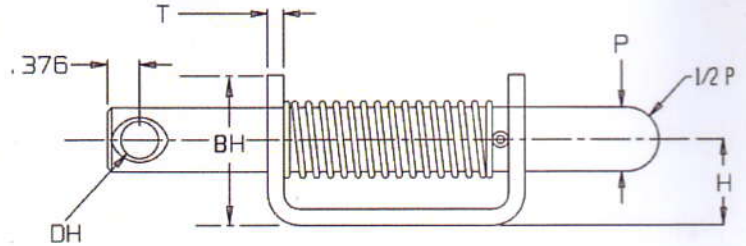
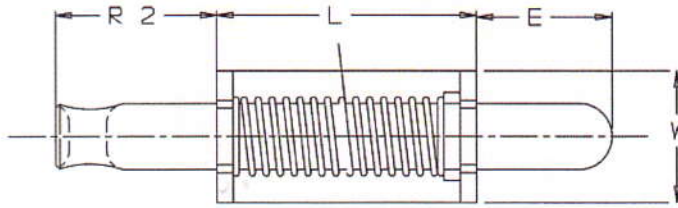
ORDERING INFORMATION



Special forms, offsets, hole sizes or welding projections are available to your specifications.

Extension retracts 1.35", so that it cannot fully retract into body.
* Designated dimension can be altered to meet your specifications

Heavy Duty Spring Latch Series 784



PIN PULL BACK DISTANCE = 1.3"
SPRING PRESSURE @ 1.00" = 8 LBS

784 with Handle:



PIN

P	Pin Diameter	.750	
*	E	Extension	1.56
	R2	Handle Extension	1.87
	DH	Handle Hole	.437

BODY

W	Width	1.50
BH	Body Height	1.75
L	Length	3.00
H	Height	1.00
T	Material Thickness	.187

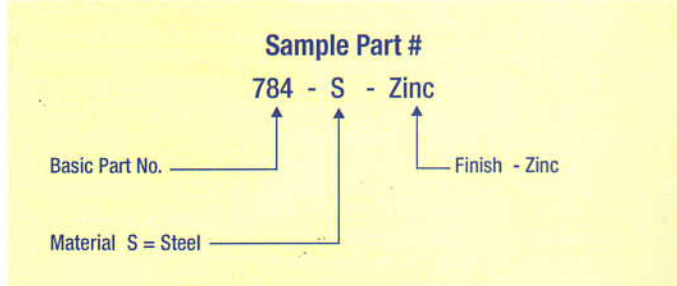
MATERIALS

Designation: S = Steel

FINISH

Available in plain steel, or with zinc plating.

ORDERING INFORMATION

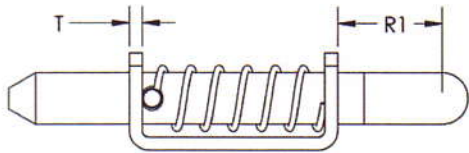
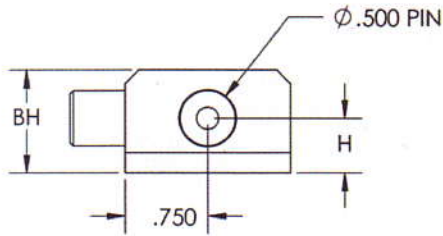
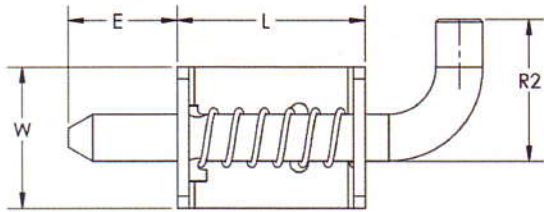
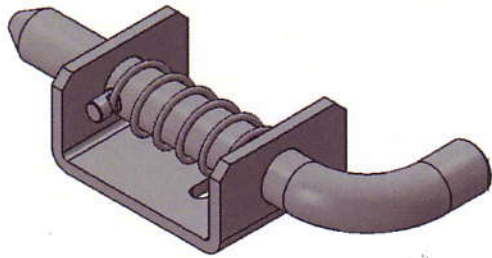


The 784 Series Spring Latch is the strongest, most heavy-duty latch in product line, with a 3/4" pin and closed knuckle for added durability and strength.

This part is available with a cable-ready pin or handle. The 784 is available with two holes, pem studs or in a no-hole version for welding. It is ideally suited for truck and trailer bodies and railcars.

*Please specify hole and handle requirements when placing order.

Heavy Duty Spring Latch Series 787



787 Series Spring Latch features a 1/2" pin with a holdback.

These large rugged latches feature a closed knuckle for added durability and strength making them well suited for truck and trailer bodies.

PIN

P	Pin Diameter	.500	
*	E	Extension	1.16
	R1	Handle Extension	1.00
	R2	Handle Extension	1.50

BODY

L	Length	2.00
W	Width	1.50
T	Material Thickness	.125
H	Height	.50
BH	Body Height	.94

MATERIALS

Readily available in plain steel, though it can also be purchased in stainless.

FINISH

Most commercial finishes are available, including zinc on steel, passivate and electropolishing on stainless steel.

ORDERING INFORMATION

Sample Part #

787 - S - Zinc

Basic Part No. ———— ↑ ———— ↑ ———— ↑

Material C = Stainless Steel S = Steel

- Passivate
- Zinc
- Other

*Designated dimensions can be alter to meet your specifications. Special forms, hole locations and sizes or welding projections are available to your specifications.